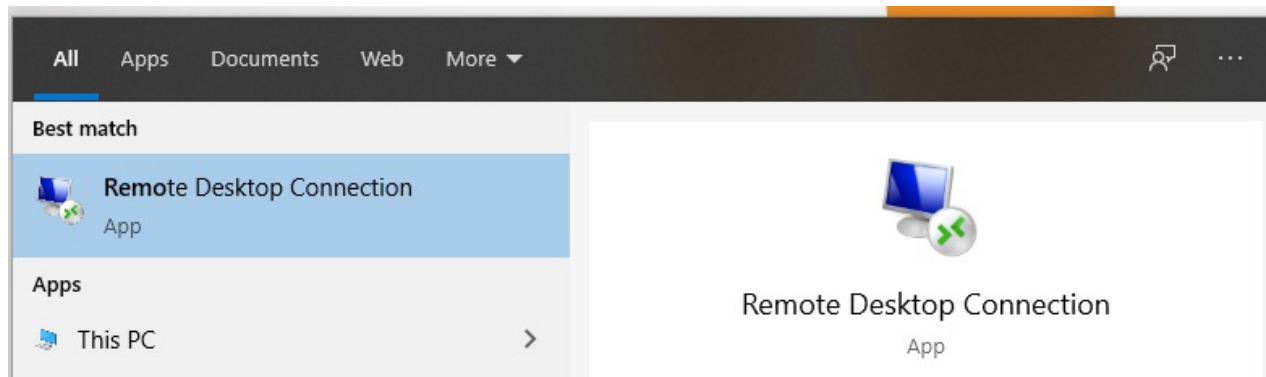


# How to Access Cloud Server with Remote Desktop Connection

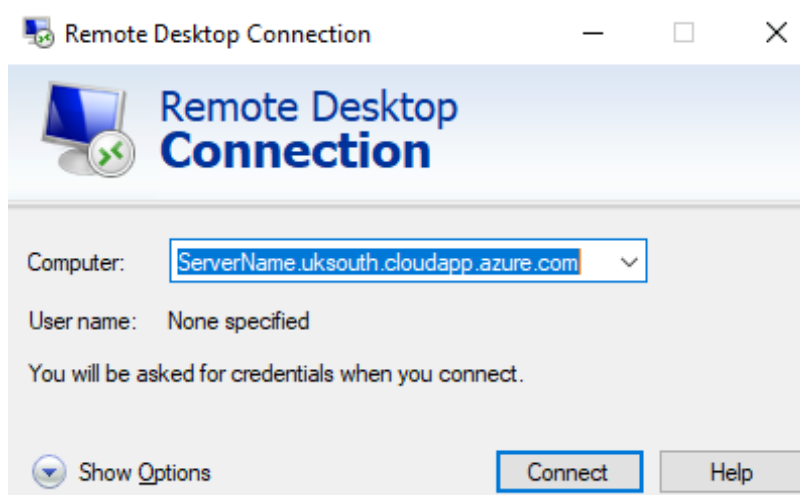
Last Modified on 20/04/2020 3:20 pm BST

To access your Cloud Server with Remote Desktop Connection, please follow the below instructions:

1. Ensure you are connecting from the IP Address you provided that can access the Cloud Server with Remote Desktop Connection.
2. On your local Windows 10 PC: In the search box on the taskbar, type **Remote Desktop Connection**, and then select **Remote Desktop Connection**.



3. Enter the full DNS name of the server, and then select **Connect**



4. Enter the login credentials for the Cloud Server at the Windows Server login screen.

