

Connecting to SharePoint Designer

Last Modified on 24/01/2020 12:45 pm GMT

Connecting to SharePoint Designer

Downloading SharePoint Designer

You can use SharePoint Designer 2010 to edit or modify a SharePoint Foundation 2010 site, this can be downloaded free of charge via the Microsoft website or by clicking the following links.

SharePoint Designer 2010 64bit

SharePoint Designer 2010 32bit

Pre-Requirements

Before you can connect WSS Designer to your site you will need to login to your

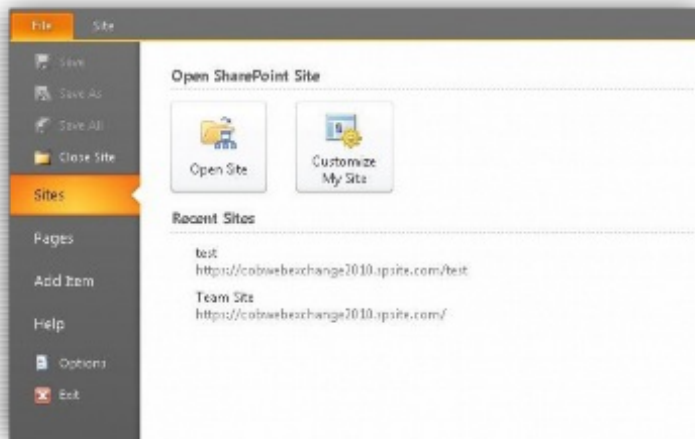
SharePoint site and go to **Site Actions > Site Collection Administration > SharePoint Designer Settings** and ensure the **Enable SharePoint Designer** is selected.

Allow Site Owners and Designers to use SharePoint Designer in this Site Collection Specify whether to allow Site Owners and Designers to edit the sites in this Site Collection using SharePoint Designer. Site Collection Administrators will always be able to edit sites.	<input checked="" type="checkbox"/> Enable SharePoint Designer
Allow Site Owners and Designers to Detach Pages from the Site Definition Specify whether to allow Site Owners and Designers to detach pages from the original Site Definition using SharePoint Designer. Site Collection Administrators will always be able to perform this operation.	<input type="checkbox"/> Enable Detaching Pages from the Site Definition
Allow Site Owners and Designers to Customize Master Pages and Page Layouts Specify whether to allow Site Owners and Designers to customize Master Pages and Page Layouts using SharePoint Designer. Site Collection Administrators will always be able to perform this operation.	<input type="checkbox"/> Enable Customizing Master Pages and Page Layouts
Allow Site Owners and Designers to See the Hidden URL structure of their Web Site Specify whether to allow Site Owners and Designers to view and manage the hidden URL structure of their Web site using SharePoint Designer. Site Collection Administrators will always be able to perform this operation.	<input type="checkbox"/> Enable Managing of the Web Site URL Structure

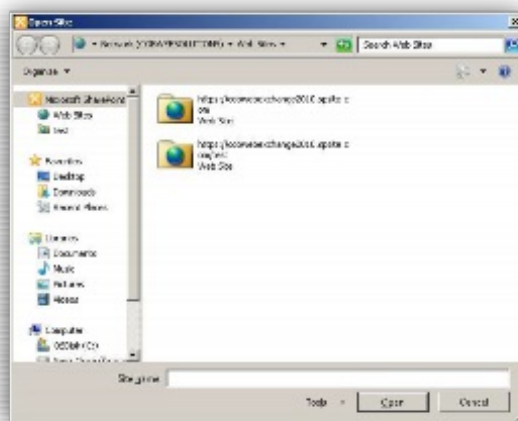
Note: We recommend before you make any changes to your site you make a backup of the content, otherwise any detrimental changes could be irreversible and costly to resolve as we may need to restore your content which is a chargeable service.

Connecting to SharePoint Designer 2010

1. Open up SharePoint Designer 2010 and go to **File > Open Site**.



2. Type in the URL of the SharePoint site.



3. When prompted for the log in details, make sure the account you're using has the correct permissions and once loaded it will look similar to below.

Lists and Libraries

Custom SharePoint Document External List From List Edit Delete Revert Administration Save as List Settings Columns Edit Preview in Browser View Page Template

Navigation < Lists and Libraries

Site Objects Team Site Lists and Libraries

Team Site

Lists and Libraries

Workflow Site Pages Site Assets Content Types Site Columns External Content Types Data Sources Site Groups Subsites

Name	Type	Item	Modified Date	Description
Lists				
Announcements	Lists	1	09/08/2011 06:51	Use this list to track upcoming events, status updates or other team news.
Calendar	Lists	0	19/08/2011 06:51	Use the Calendar list to keep informed of upcoming meetings, deadlines, and other important events.
Email Test	Lists	1	05/10/2011 07:44	
Links	Lists	0	19/08/2011 06:51	Use the Links list for links to Web pages that your team members will find interesting or useful.
New Business	Lists	0	23/08/2011 10:19	
Tasks	Lists	0	05/10/2011 07:14	Use the Tasks list to keep track of work that you or your team needs to complete.
Team Discussion	Lists	0	19/08/2011 06:51	Use the Team Discussion list to hold newsgroup-style discussions on topics relevant to your team.
Document Libraries				
Shared Documents	Document L...	1	24/11/2011 15:05	Share a document with the team by adding it to this document library.
Site Assets	Document L...	0	23/08/2011 06:51	Use this library to store files which are included on pages within this site, such as images on Web pages.
Site Pages	Document L...	2	24/11/2011 14:04	Use this library to create and store pages on this site.
Style Library	Document L...	0	28/08/2011 09:28	Use the style library to store style sheets, such as CSS or XSL files. The style sheets in this gallery can be used by the ...
Uploading a document	Document L...	2	08/12/2011 14:24	
External Lists				
SDCTests	External Lists	External	11/10/2011 13:12	